

Kundalini Power

Awakening the Rainbow Serpent

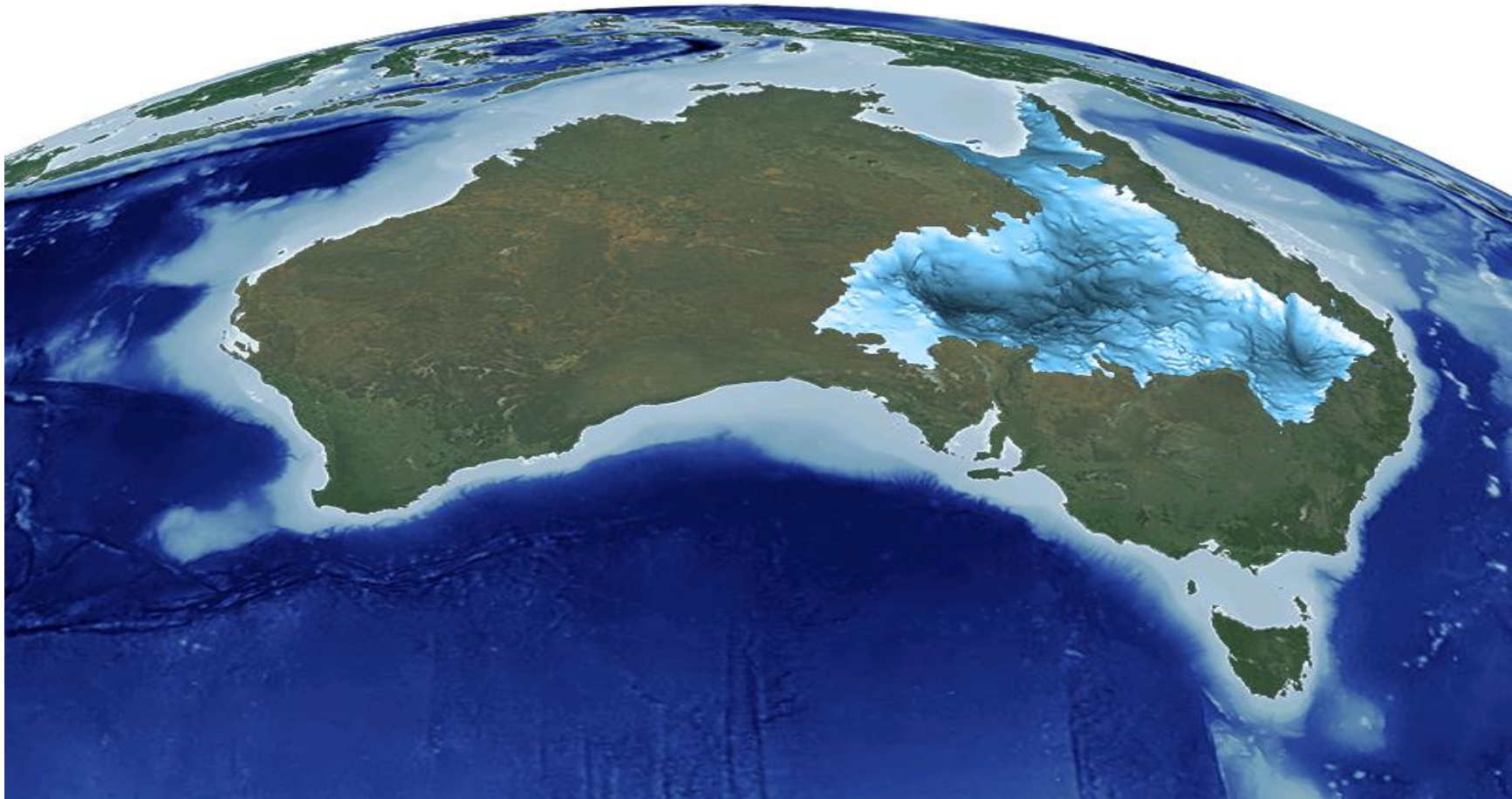
Water in Australia

- Climate change
- Ocean Energy
- Hydropower
- Source of bioenergy
- Source of geothermal energy
- Natural strength of Australian nation
- National solution

Great Artesian Basin



Figure 1
GREAT ARTESIAN
BASIN



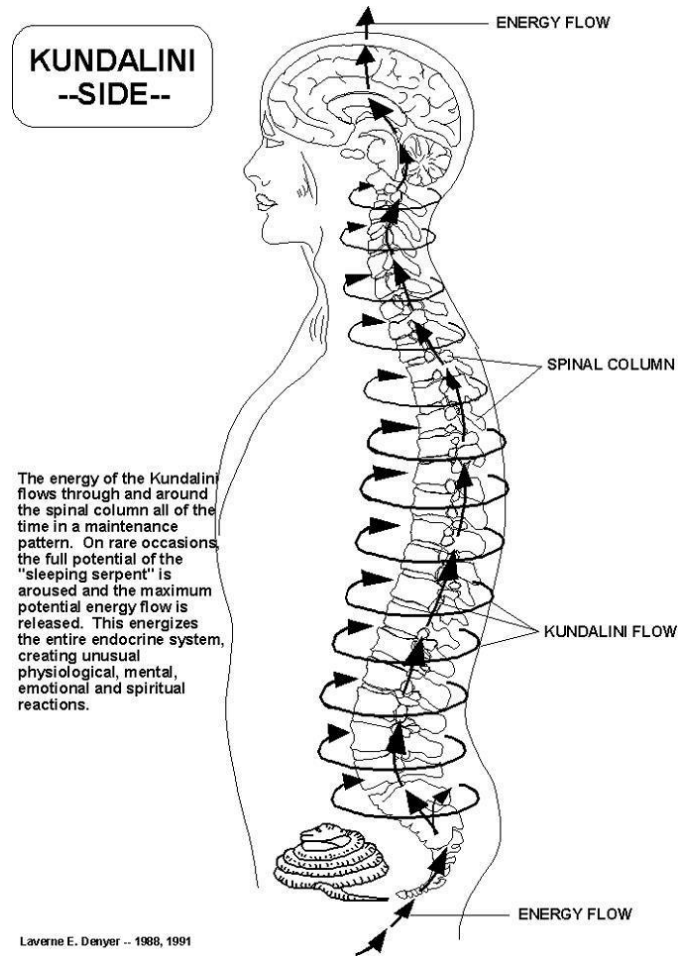
Kundalini Serpent

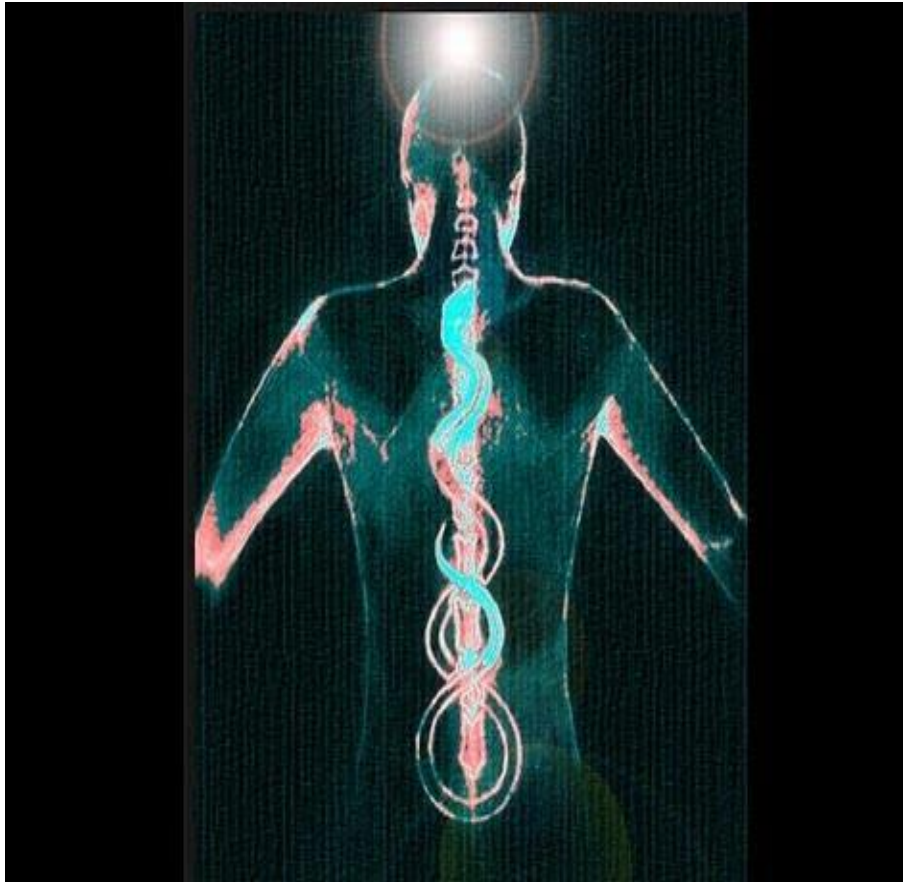




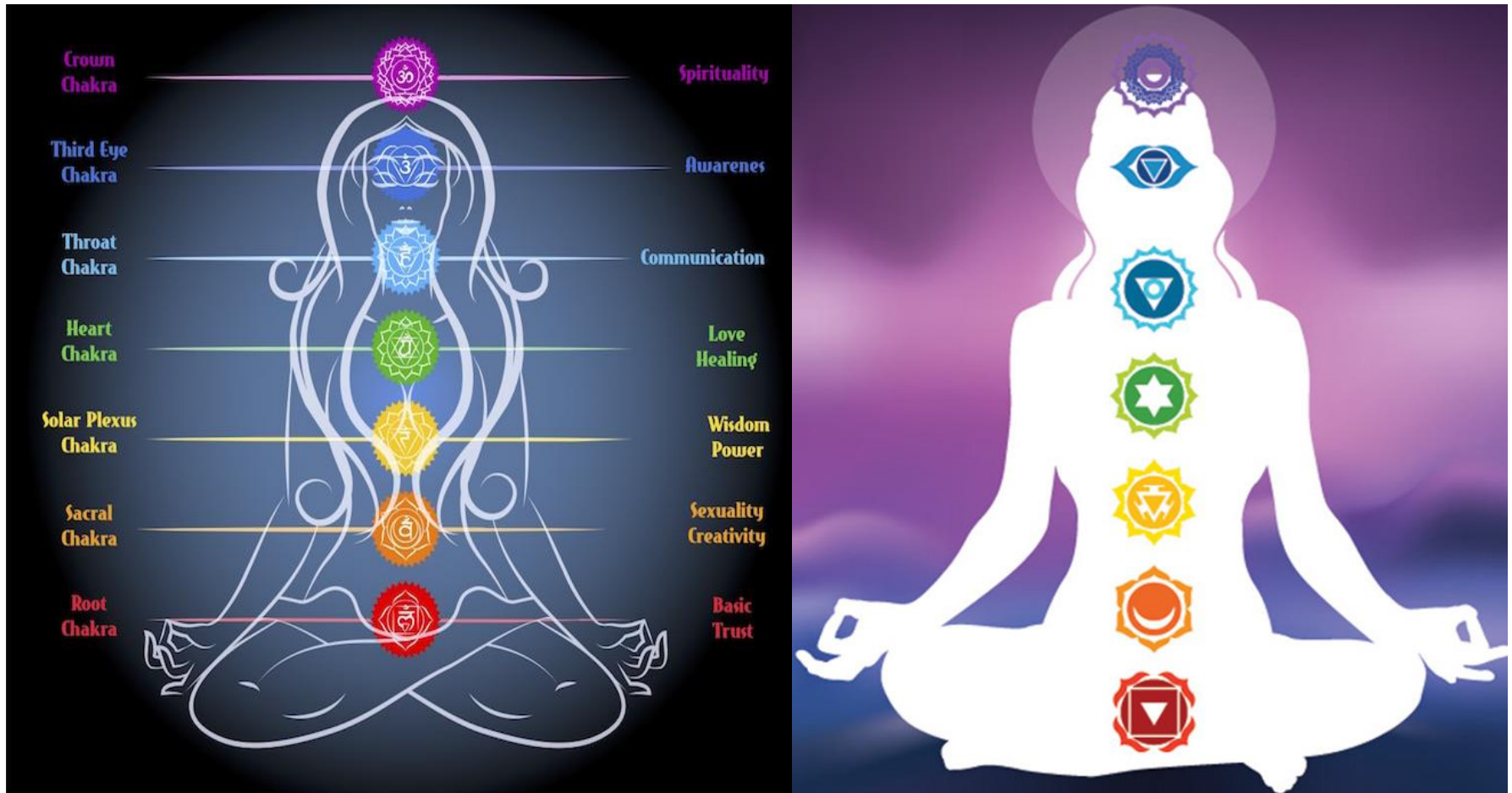


Kundalini energy flow



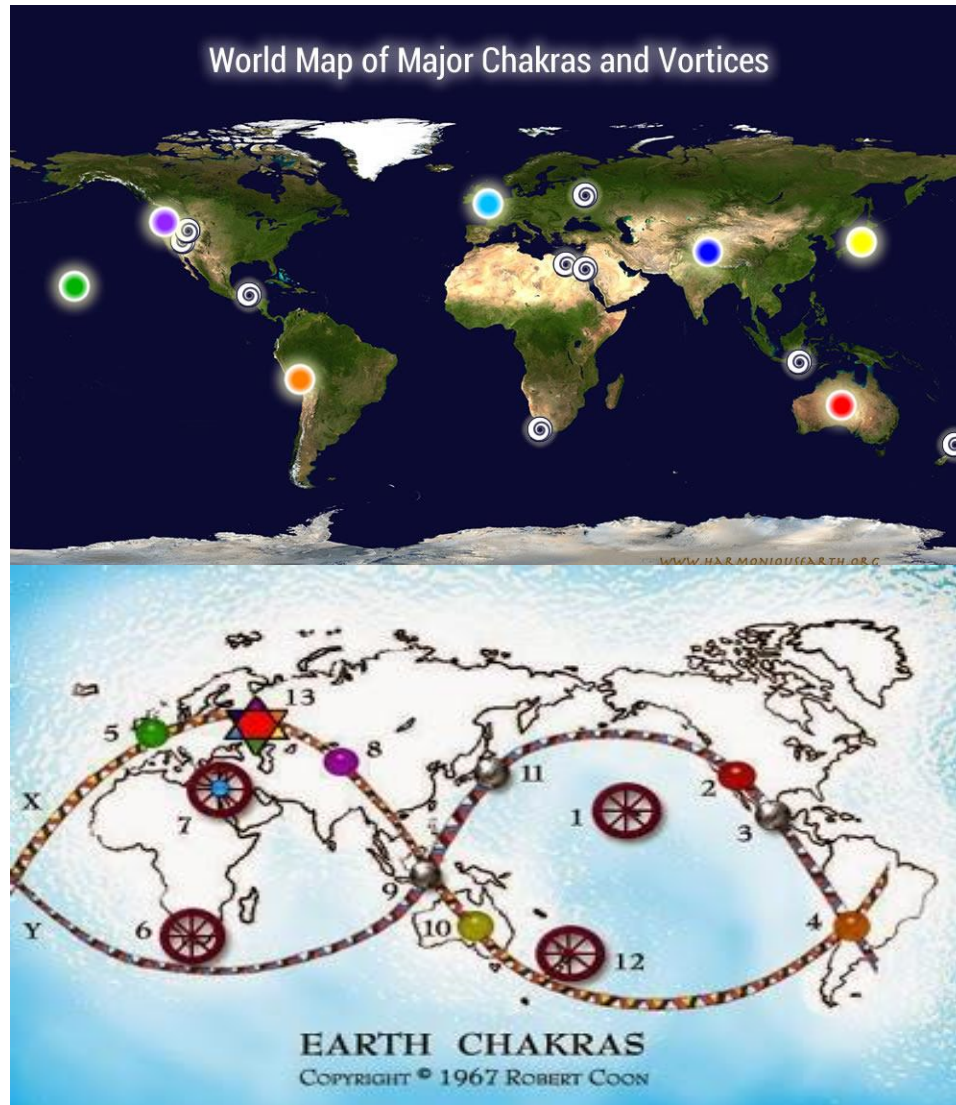


Chakras





Planetary chakras

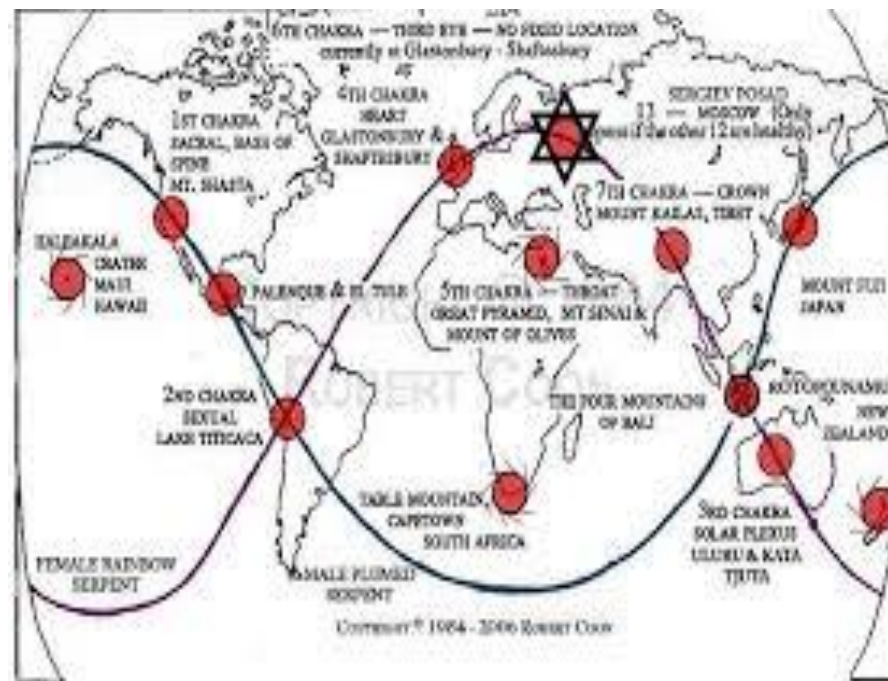


UNDERSTANDING THE CHAKRAS OF PLANET EARTH

ELECTROMAGNETIC COHERENCE AND HUMAN AFFECTS



STILLNESS
SOCIETY
WWW.WINDSPOT.COM

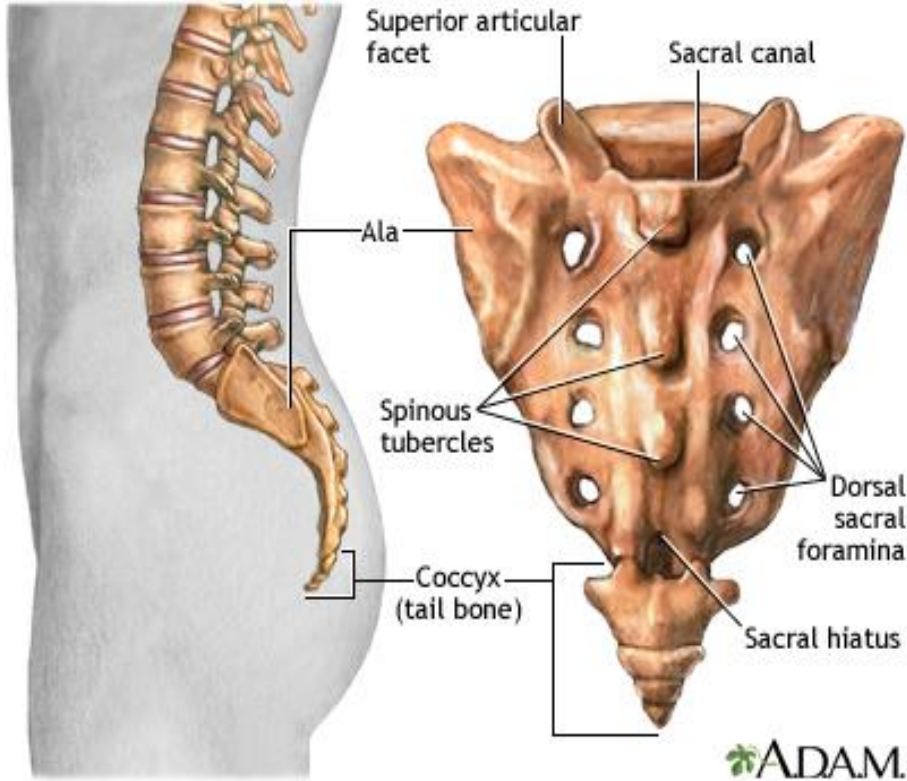


Uluru



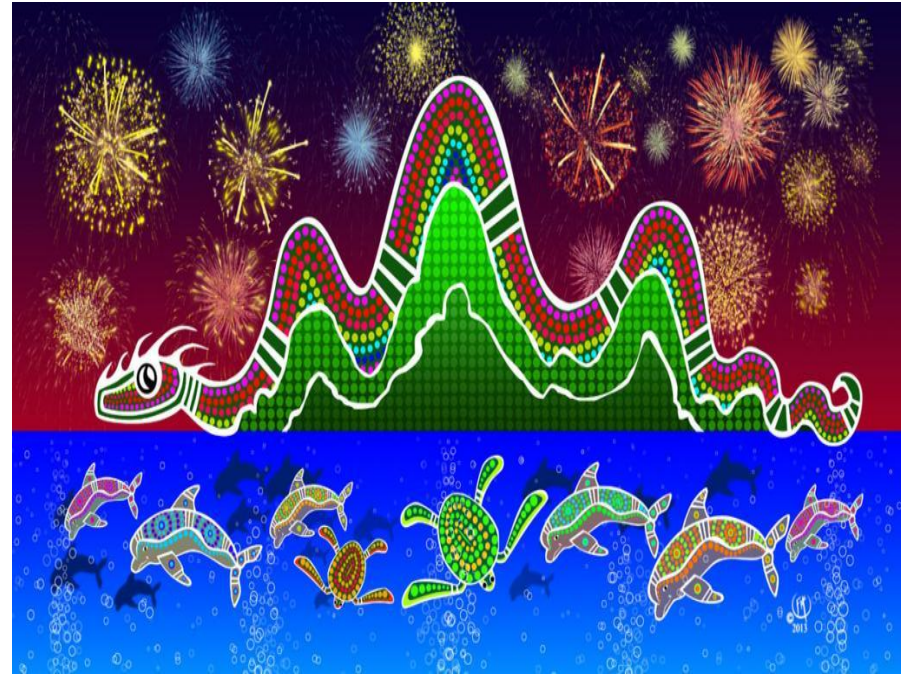


Earth's tailbone



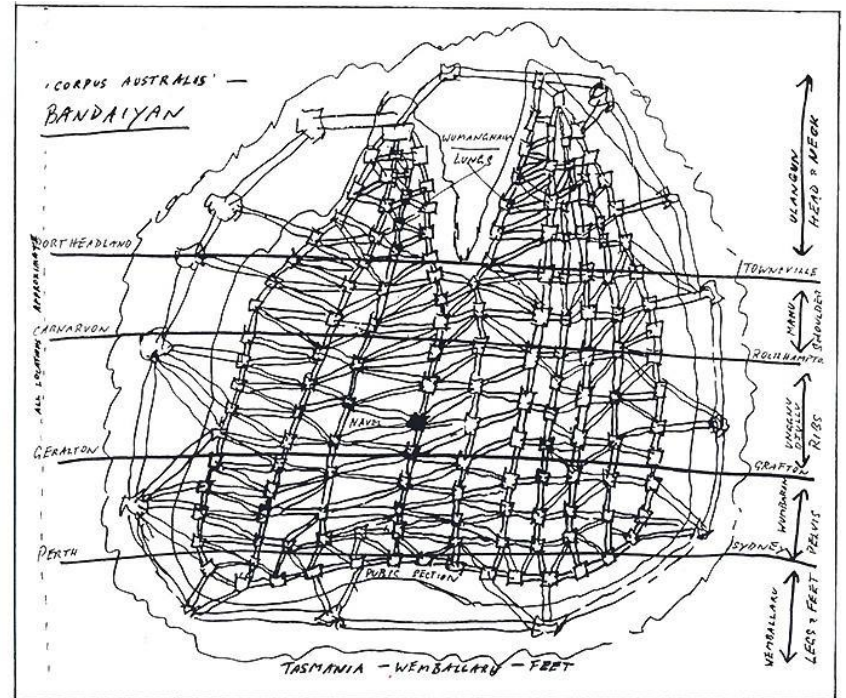
Rainbow serpent

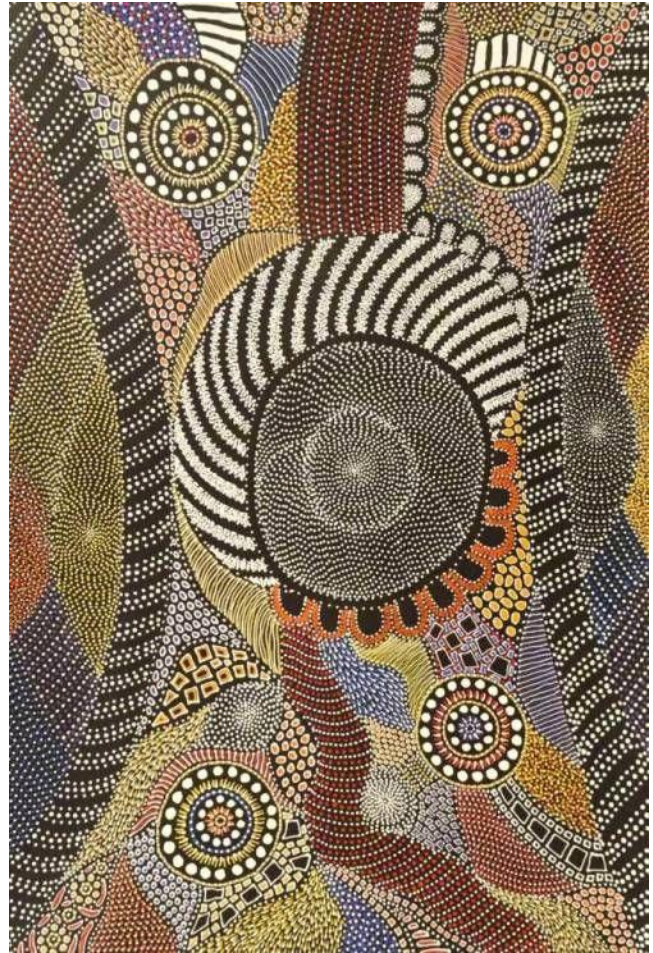
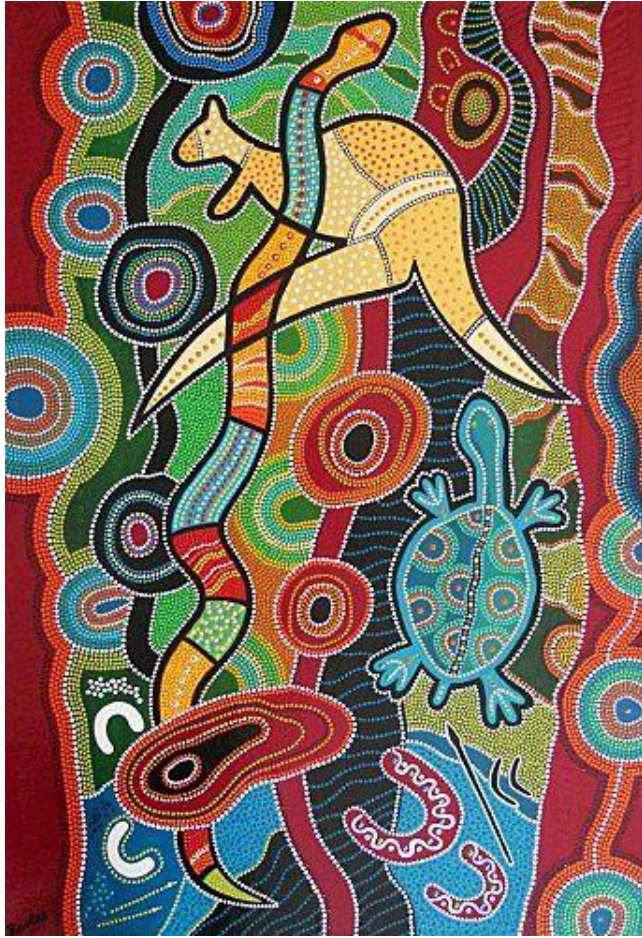


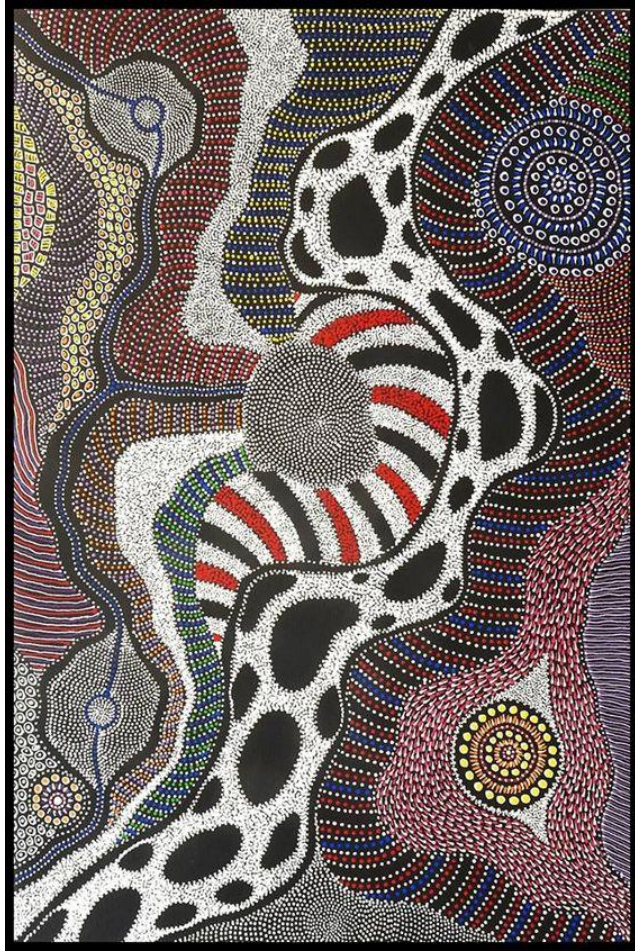


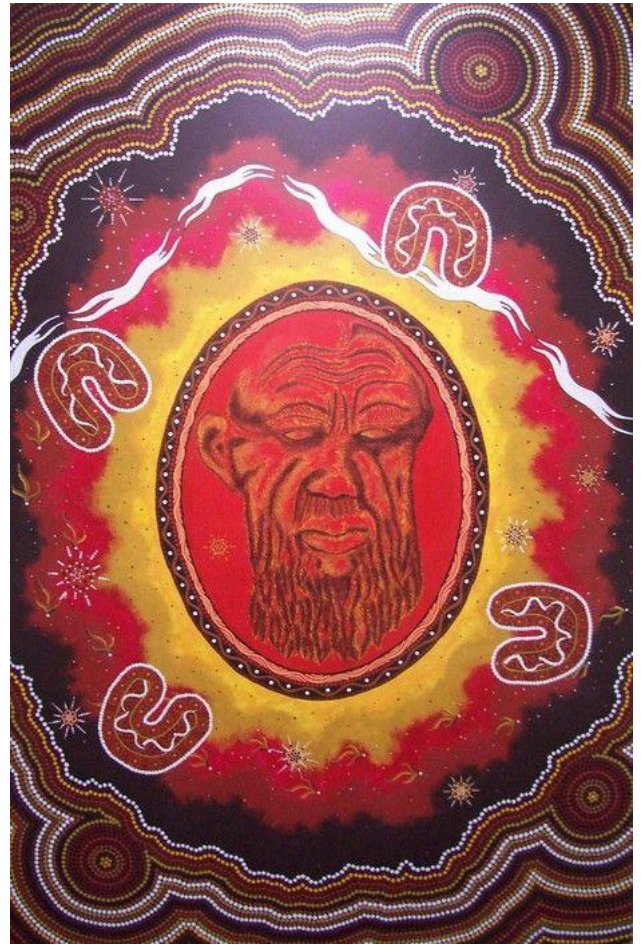


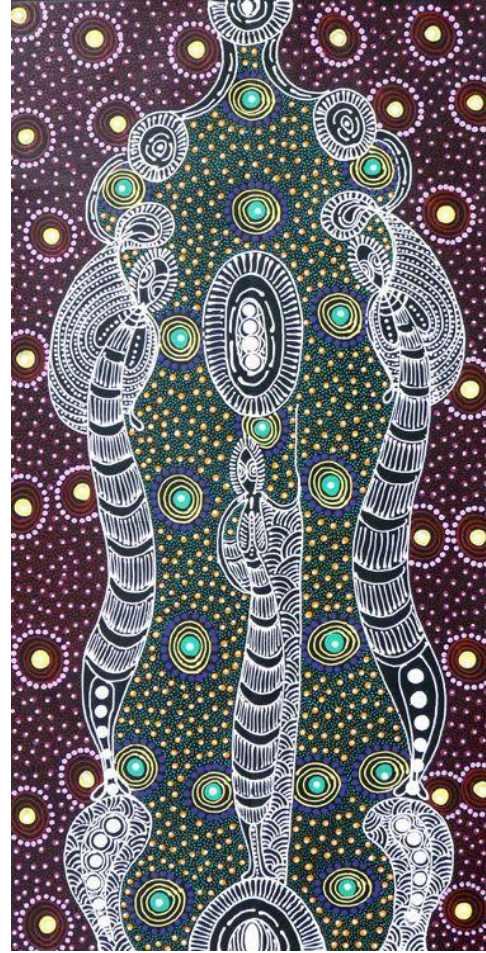
Songlines

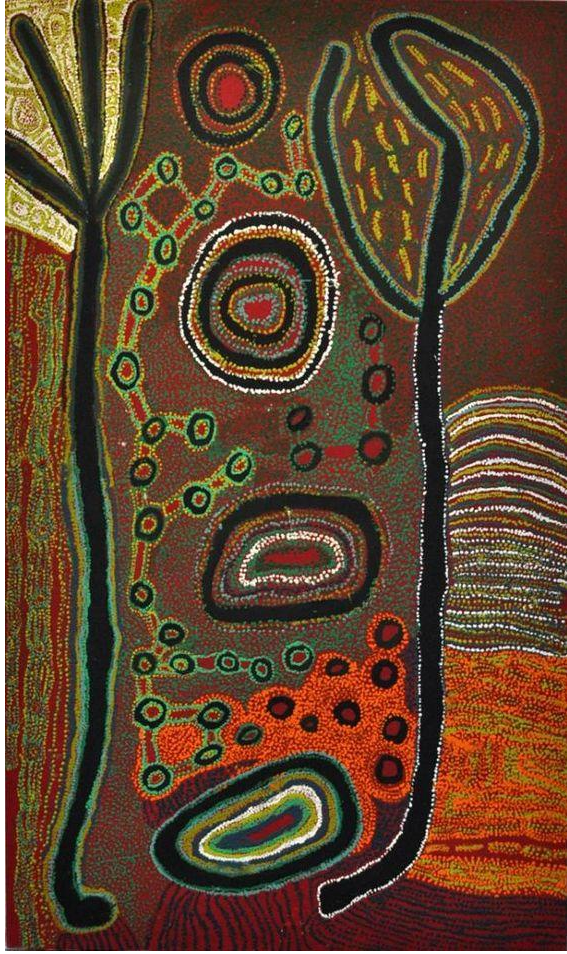


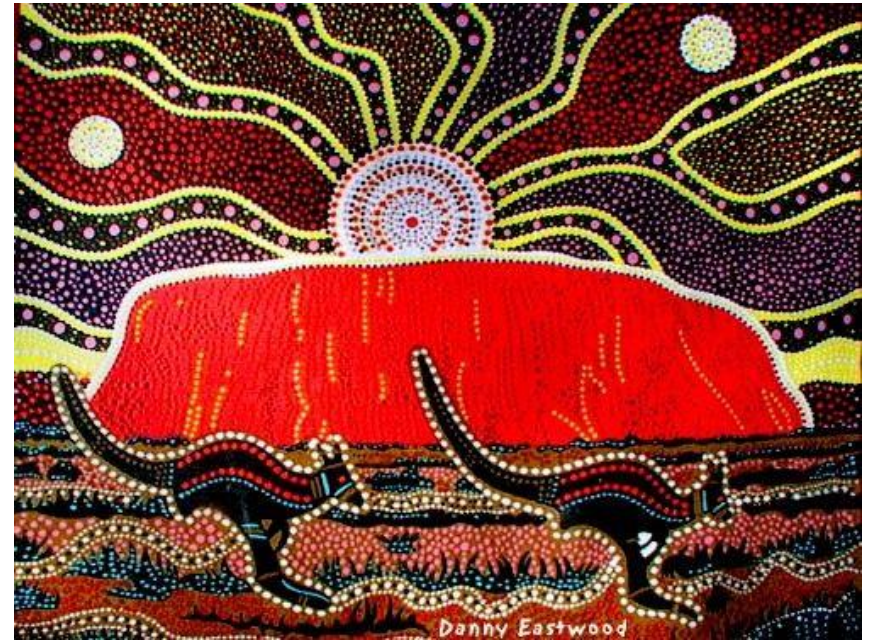
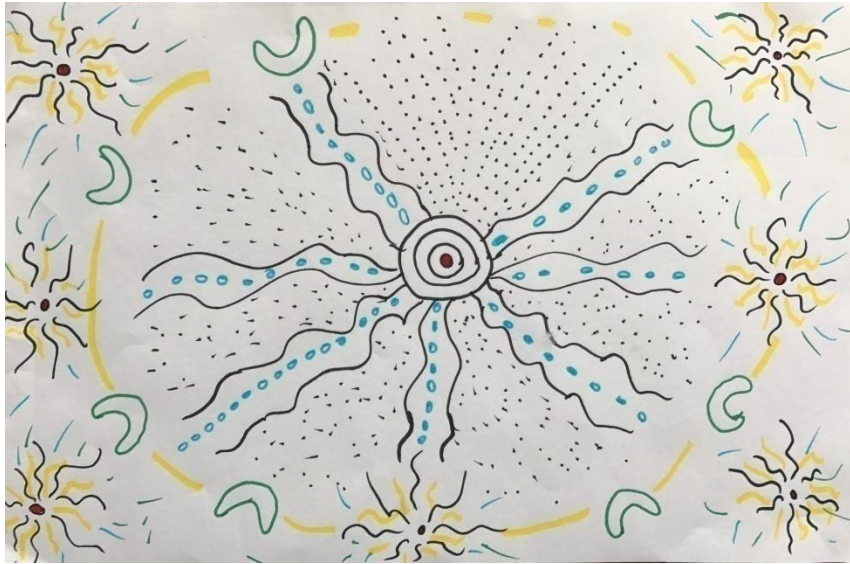












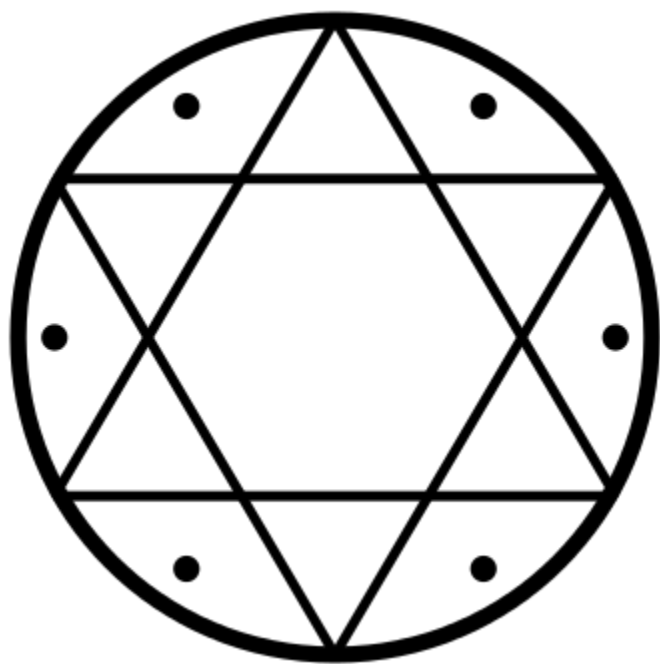
03-10
JULY
2016

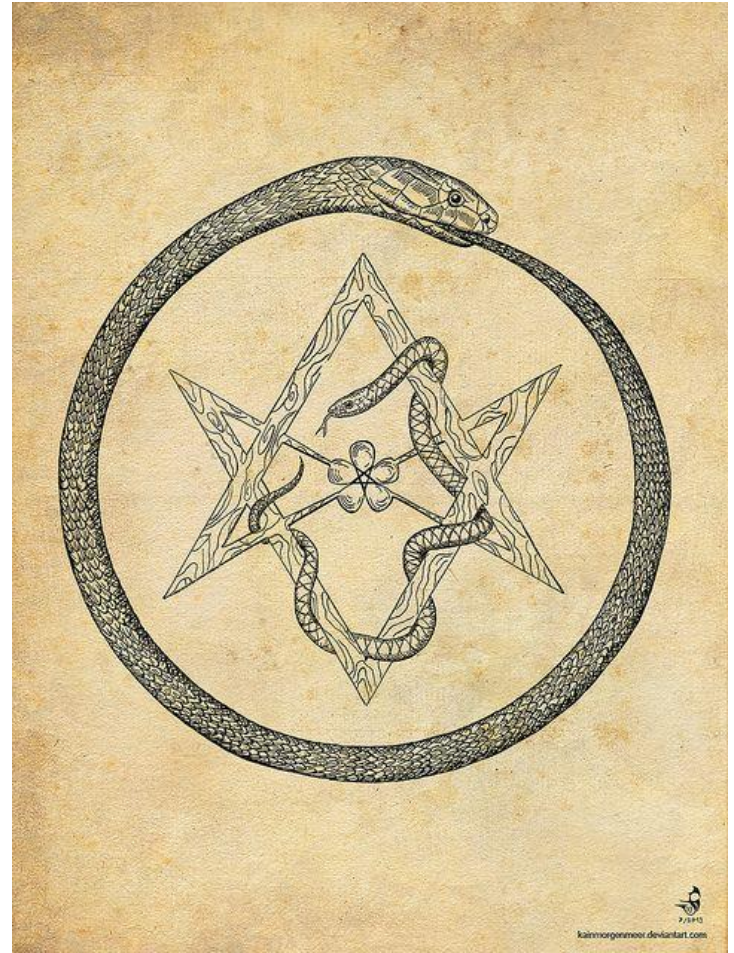
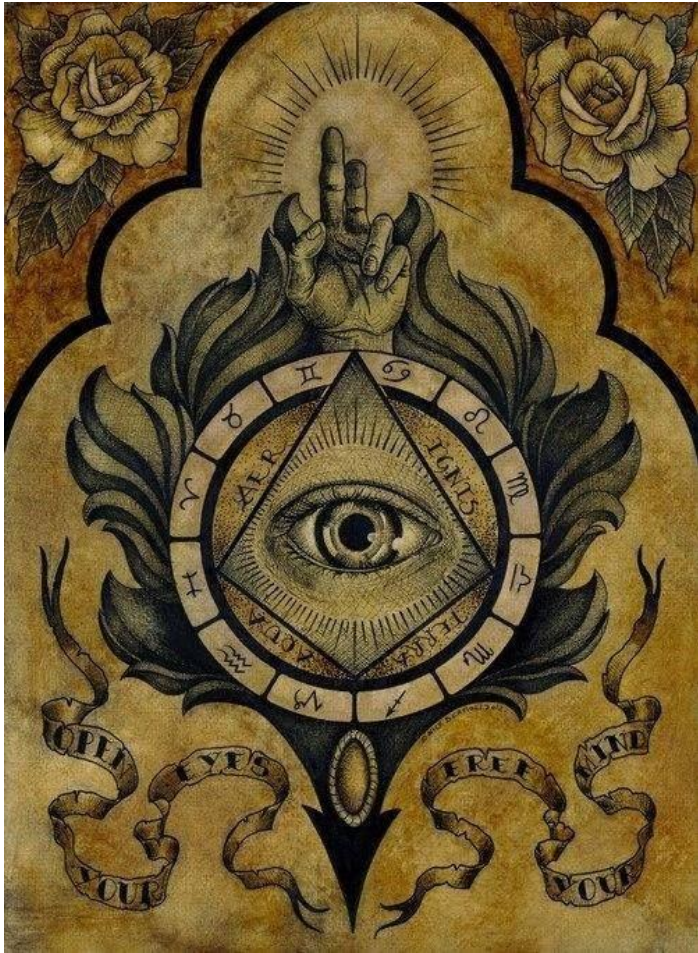
Songlines
the living narrative
of our nation

celebrating NAIDOC Week
www.naidoc.org.au

NAIDOC Week is a national week of celebration for Aboriginal and Torres Strait Islander peoples. It is a time to celebrate the achievements of our people, to share their stories and to learn about their rich and diverse cultures. NAIDOC Week is a time to celebrate the resilience and strength of our people, and to share their stories and to learn about their rich and diverse cultures. NAIDOC Week is a time to celebrate the resilience and strength of our people, and to share their stories and to learn about their rich and diverse cultures.







Soloman's key



Invoking And Banishing The Pentagram

Invoke



Earth

Banish



Invoke



Fire

Banish



Invoke



Water

Banish



Invoke

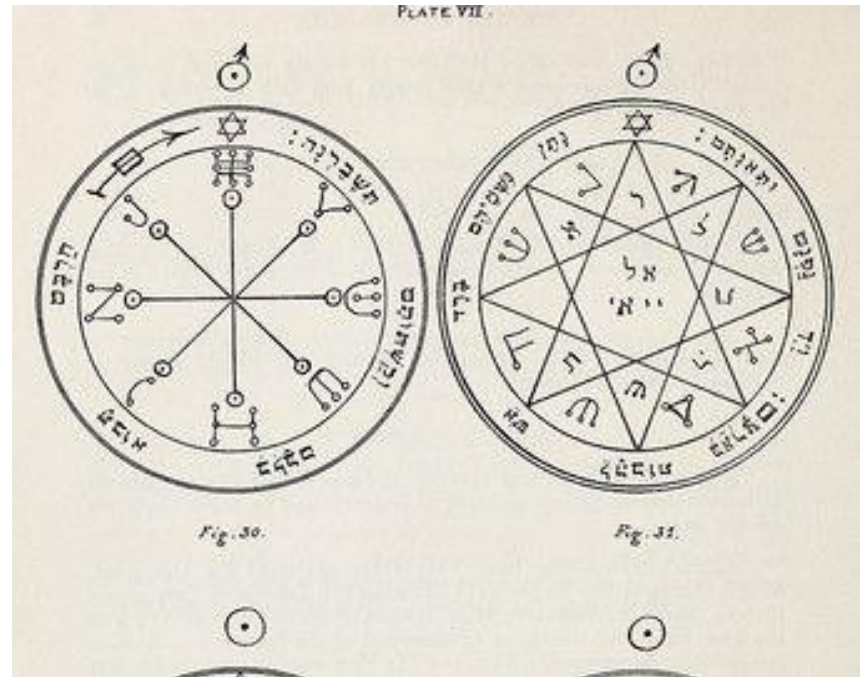


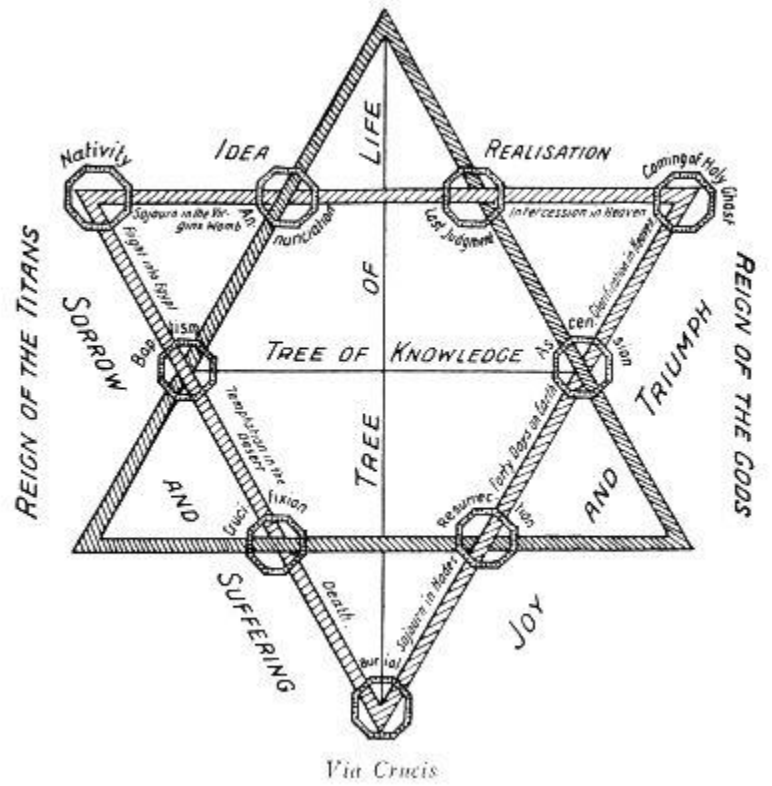
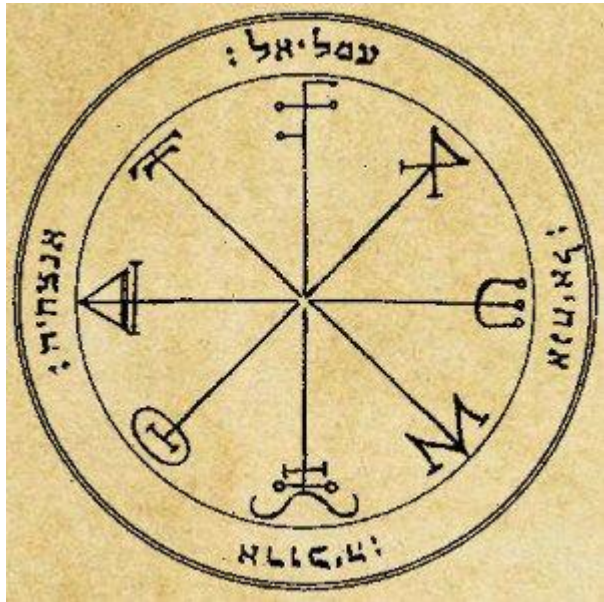
Air

Banish



PLATE VII.





The great Australian transformation

- Kundalini / yoga
- Planetary chakras
- Rainbow serpent
- Songlines
- Solomon's key
- Inland sea / freshwater lake
- Multicultural pioneering
- The great Australian transformation

Conscious evolution

